

**VINNO8**

Groundbreaking Design, Powerful Capabilities



# RADIOLOGY SUPPLIES

1994 Douds Road  
Sefton,  
RD7 Rangiora 7477  
Call us on 0800 326 315.  
<https://radiologysupplies.co.nz/>

**VINNO**

**VINNO 8 brings premium performance without bounds. It combines advanced zone imaging technology, smart workflow, compact and light weight design all in one.**

- Advanced Imaging Technologies
- Enhanced OB/GYN Application
- Extended Cardiac Application
- Discover More
- Innovative Design

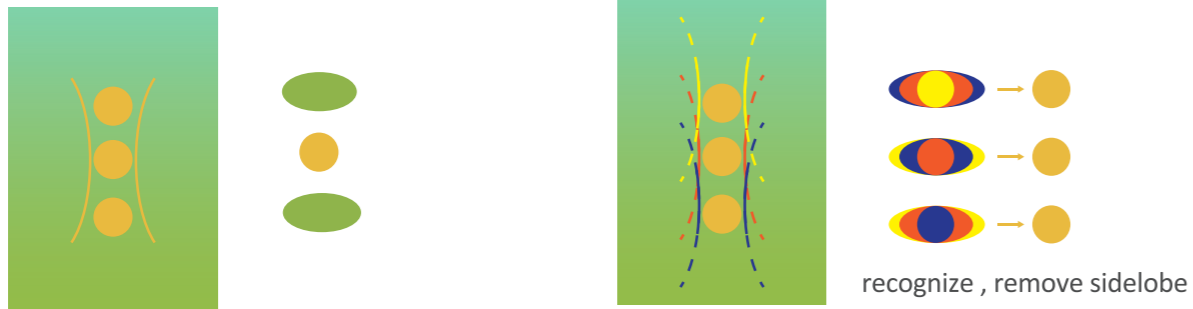




# Advanced Imaging Technologies

## Zone Imaging

Zone Imaging technology acquires better image resolution and energy distribution in entire zone area through apodizing transmission in multiple frequency and instantaneous phase superposition

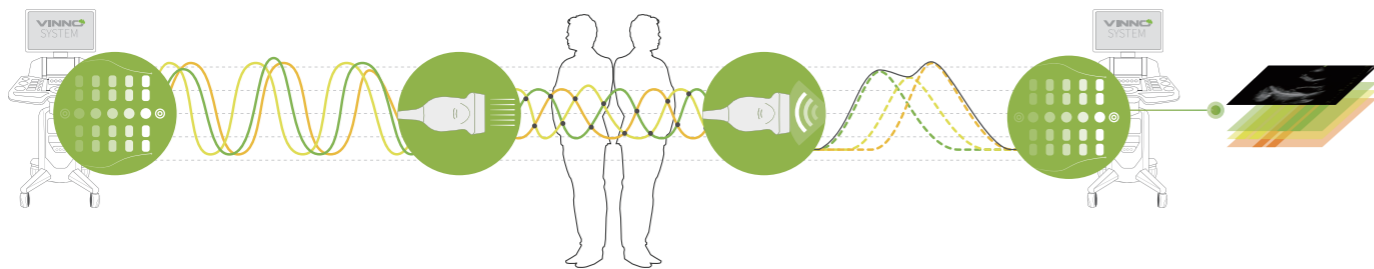


### Partially Focusing (Traditional)

The energy distributes in dead focus area and attenuates in far field

### Focusing In Entire Zone (Zone Imaging)

Smart beam shape control and uniform energy distribution in entire zone area



#### Transmit

Apodizing transmission in multiple frequency

#### Focus

Focus in entire zone area through instantaneous phase superposition

#### Receive

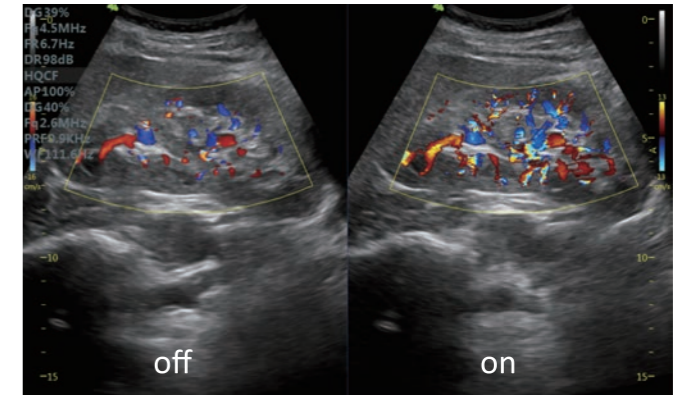
Compound in group phases via coherence technique

#### Imaging

Acquire the images after grid cross processing

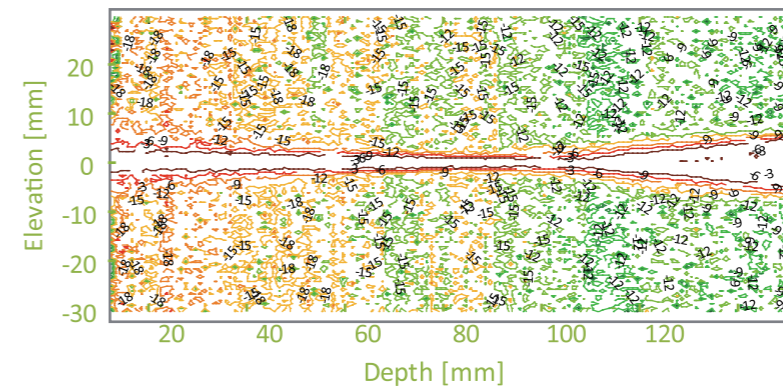
## VFlow

VFlow is an advanced adaptive filter technology of color flow from VINNO to enhance the detective sensitivity of tiny blood flow

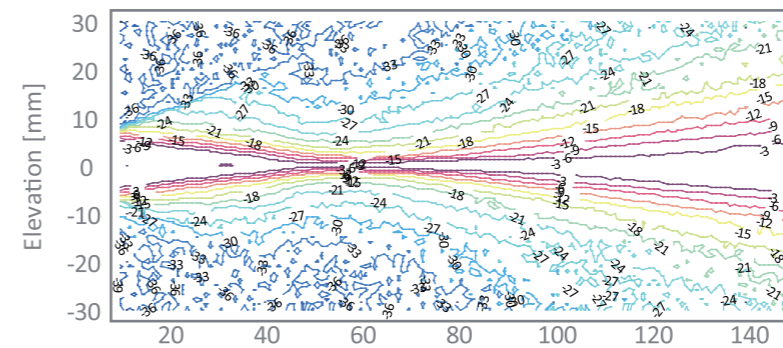


## Pure Wave Probe Technology

Better orientation delivers better penetration to difficult person



Pure Wave Probe

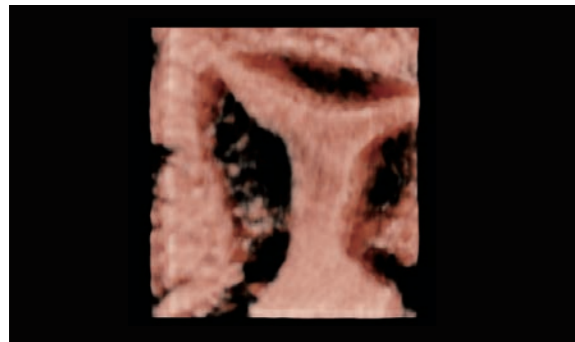


Traditional Probe

## Enhanced OB/GYN Application

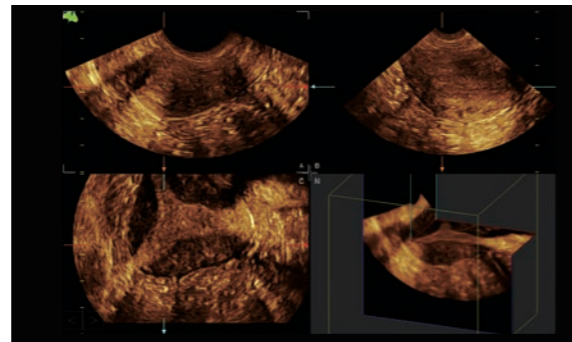
### Volume Contrast Imaging(VCI)

Adjust slice thickness on 2D planes in rendering 3D or 4D mode to help enhance contrast resolution.



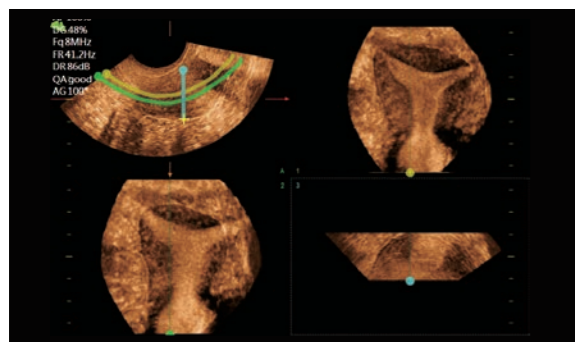
### Niche View

Reconstruct a volume structure with multiplanar views, better reveal the spatial correlation of tissue structure.



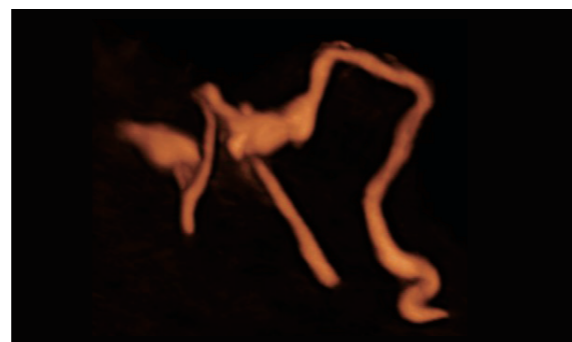
### Multiline Free View

Obtain any plane from a volume data by simply drawing a line, curve, through a structure. This valuable technology enables views of even irregularly shaped structures not attainable in 2D imaging. Now we provide up to 3 Free view images displayed simultaneously



### Hysterosalpingo Contrast Sonography(HSG)

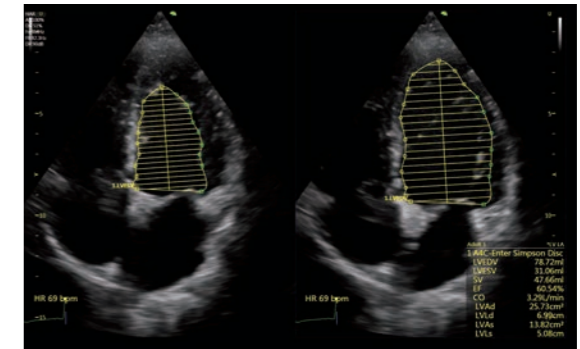
A simple and well-tolerated ultrasound procedure used to access the patency of the fallopian tubes and the abnormalities of the uterus and endometrium



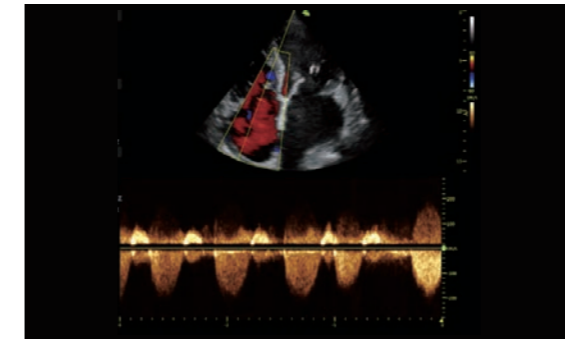
## Extended Cardiac Application

### Auto EF Measurement

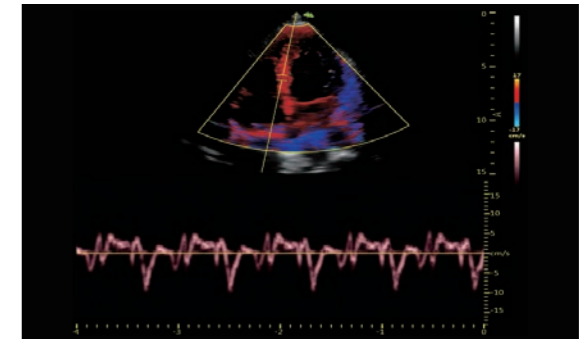
The system can calculate cardiac function of EF values through clicking three different key position instead of tracing the whole endocardium edge by manual which saves a lot of time.



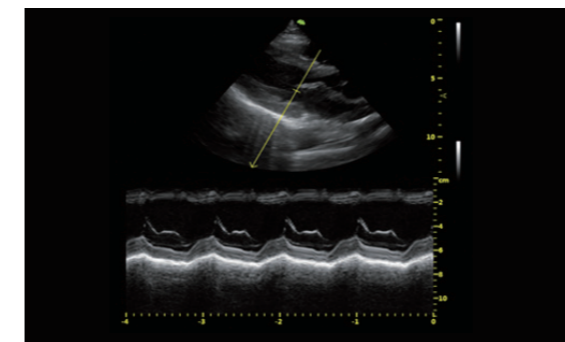
### Various Imaging Modes for Accurate Cardiac Analysis



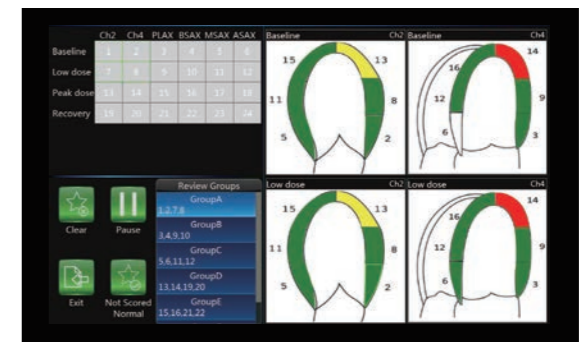
CW



TDI



Multi-Angle M Mode (MAM)



Stress Echo



## Discover More

### MSK Application

- **Simple To Learn**  
Intuitive touch panel operation and built-in user manual for reference
- **Easy Compare**  
Before and after exam comparison with Easy Compare function
- **Precise Imaging**  
2-23Mhz frequency range enables you see from superficial to deep tissue
- **Accurate Biopsy Guidance**  
Needle enhancement makes the needle tip more visible

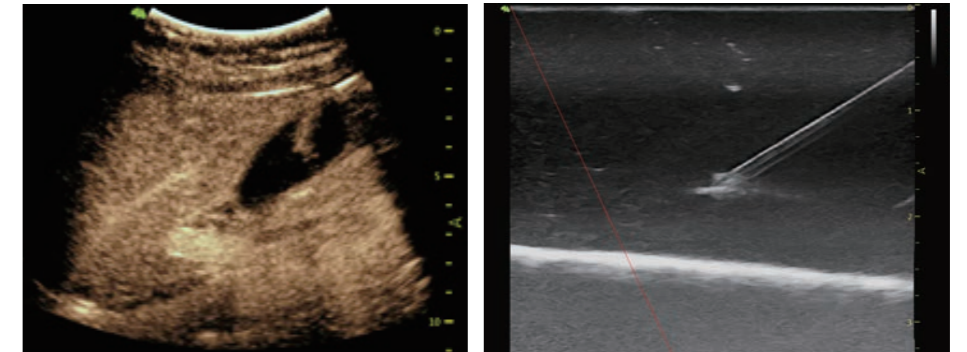


### General Application

**Easy Compare** for patient exam follow up

**Needle Enhancement** is a nice tool to visualize the needle tip in radiology interventional application.

**Contrast Bubble Imaging** is good for organ edge delineation, monitoring blood perfusion in organs and recognition of lesion characterization.



## Innovative Design



### 1、 Battery Pack

It can be the backup battery inside the system supports 2-hour working time for each pack.

### 2、 4 Probe Holders

### 3、 Physical Keyboard Bracket (optional)

### 4、 2 or 3-probe Extension (optional)

### 5、 Battery Indicator

The light indicator will be illuminated after the battery is set in place.

